

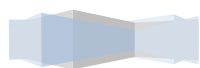
Genture Electronics

Dedicate itself to LED innovation& application



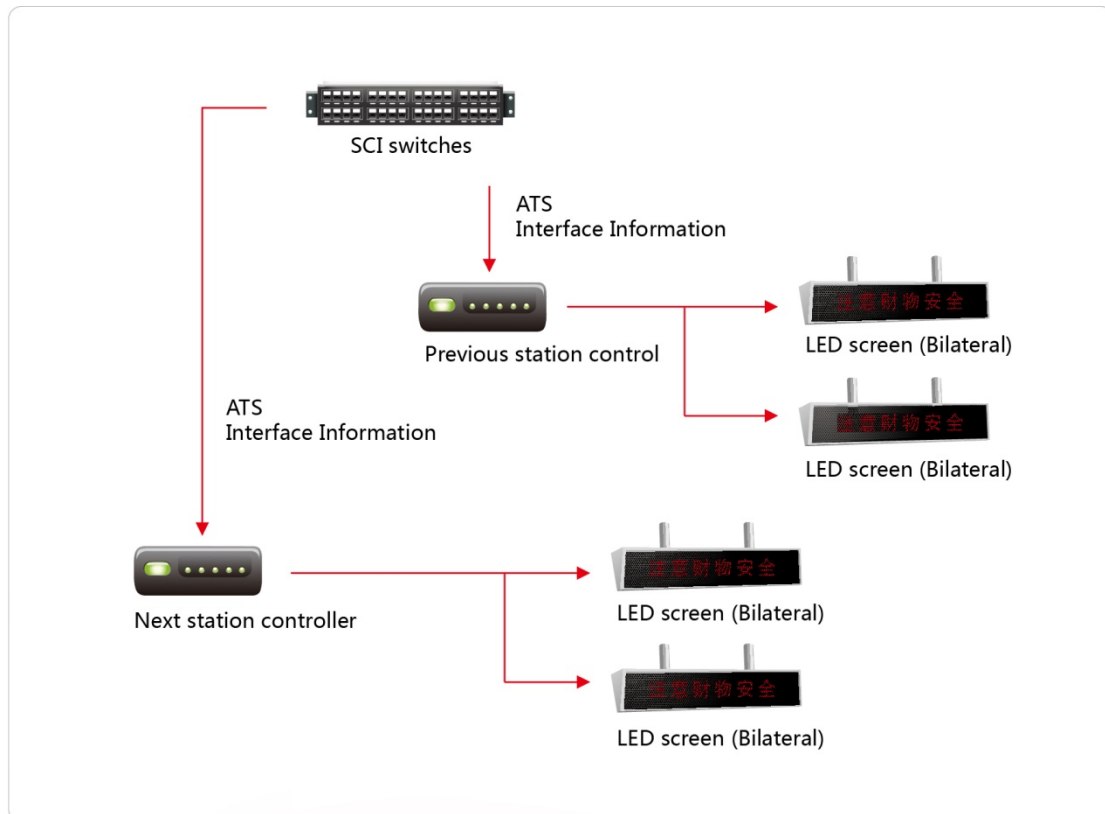
Product Manual

---PIS (Passenger Information System)



Part 1 PIS (Passenger Information System)

1.1.1 Product Overview

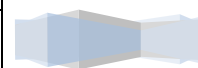


The Passenger Information System is a computer system relying on multi-media network technology, to provide information services by display terminals in station vehicles. By displaying arrive time, next station, and the terminal, etc. PIS can facility the urban public transports.

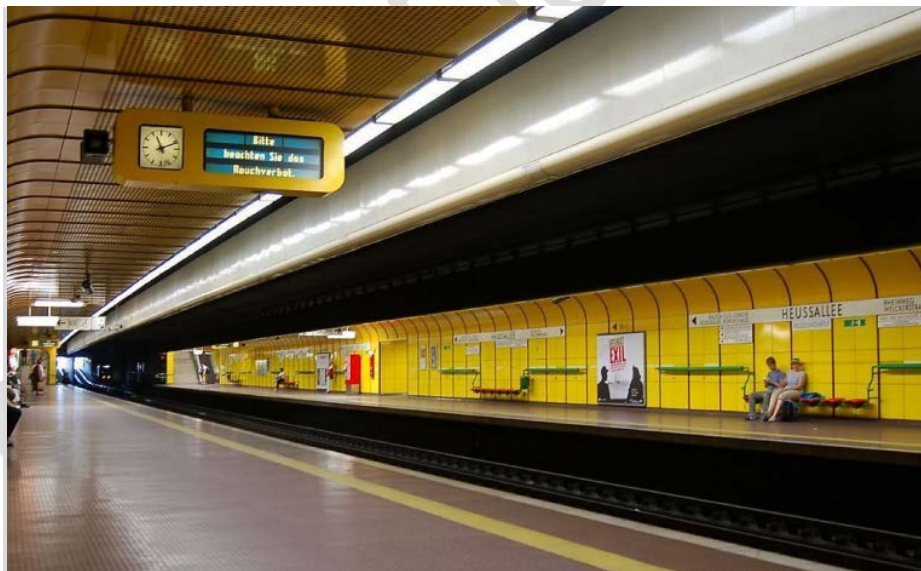


1.1.2 Specifications

Name	Elevated Station	Underground Station
Pixel Pitch	4.75mm	
Pixel Configuration	1R1G SMD 32×64	1R1G 32×64 constant current
Display Row Number	256*64	
Display Area	0.304m*1.216m	
Display Color	R, A,G	
Brightness	> 1200cd/m ²	> 800cd/m ²
External Material	Galvanized plate	
Viewing Angle	±120°	
Operating Temperature	-40°C-75°C	
Working Time	>50000h	
Working Mode	7*24h, without interruption	
Life Span	>120000h	
IP Grade	IP65	
Relative Humidity	10%-95%	
Power Supply	AC220V±15%； 50Hz±10%	
Communication Distance	> 300m	
Ground Resistance	≤4Ω	



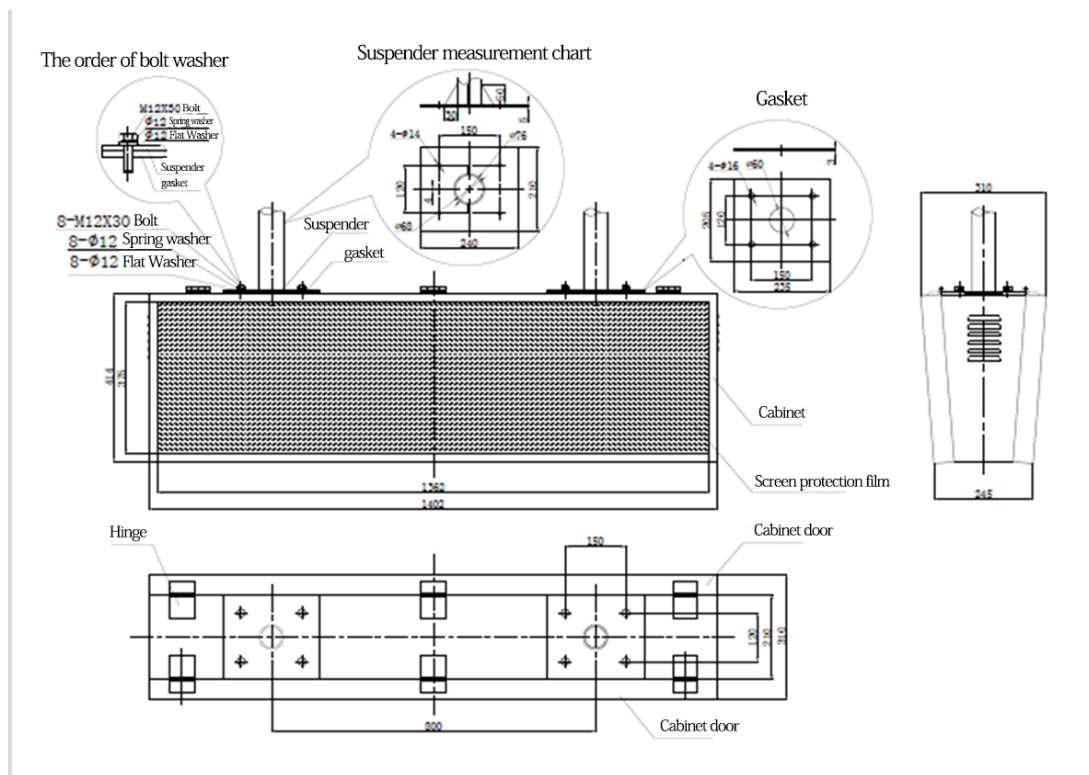
1.1.3 Typical Case



Subway & Railway Station

1.1.4 Installation Diagram





1.1.5 Contact Us

Address: Genture Electronics, No. 8 Yuanhua Rd,

Science Park in Nanjing University

210046, Nanjing, China

Web: en.genture.com

E-mail: info@genture.com

Tel: +86-25-8778227 0

Fax: +86-25-52897985

